



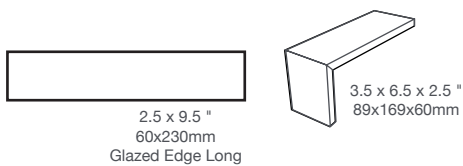
Smoke

TECHNICAL SPECIFICATIONS

Technical Characteristics	ASTM Test Result	ASTM/ANSI Test Method
Water Absorption %	<3%	A 187.1
Dimensionality (flatness, warpage, straightness, etc.)	premium grade conformance	A 187.1 ISO 10545-2
Thermal Shock & Craze Resistance	Pass	A 187.1 ISO 10545-9/11
Resistance to Stains, chemicals acids, etc.	Pass	ISO 10545-13/14
Frost Resistance	Pass	C 1026

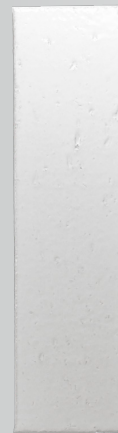
PACKAGING

Size	PC/CTN	Sqft/ctn (Sqm/ctn)	Carton/Pallet	Sqft/plt (Sqm/plt)	Lbs/ctn (Kgs/ctn)	Lbs/plt (Kgs/plt)
2.5x9.5" (60x240)	30	5.14 (0.48)	90	462.60 (42.98)	22.00 (9.98)	1,980.00 (898.20)
3.5x6.5x2.5" (89x169x60)	16	2.81 (0.26)	32	89.83 (8.35)	12.00 (5.44)	388.00 (176.00)



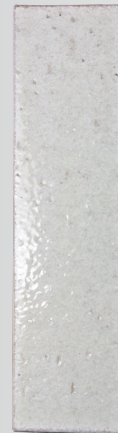
Trim formats available in all colors including blends. For packaging into please visit our website.

WHITE



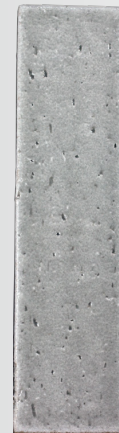
CAMB29WH

SILVER



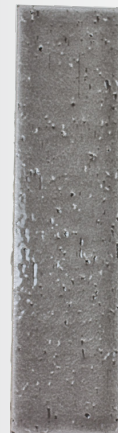
CAMB29SI

SMOKE



CAMB29SM

CHARCOAL



CAMB29CH

WHITE MIX



CAMB29WH-MIX

GREY MIX



CAMB29GR-MIX

*Mixed formats are supplied in premixed blister packs with regular ratio of 4:3:3 Median:Light:Dark tones. For optimal results mix from multiple cartons during installation.