

# Cavalier

Casabella®  
Ceramic



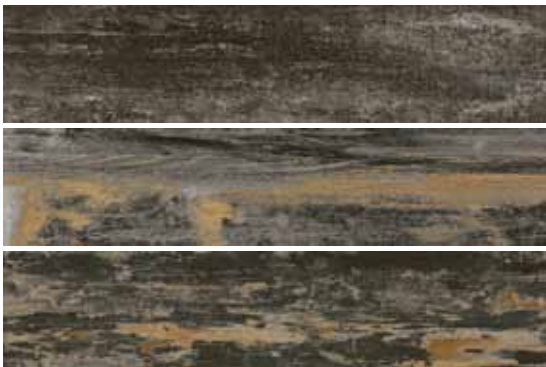
22CA10  
CA10 BIANCO  
8 1/2"x40" 21,5x100 cm

32CA10IN  
CA10 BIANCO INTRECCIO  
12"x12" 30x30 cm



22CA09  
CA09 SADDLE  
8 1/2"x40" 21,5x100 cm

32CA09IN  
CA09 SADDLE INTRECCIO  
12"x12" 30x30 cm



22CA08  
CA08 NERO  
8 1/2"x40" 21,5x100 cm

32CA08IN  
CA08 NERO INTRECCIO  
12"x12" 30x30 cm



THICKNESS

**0.34"**  
**8.5 mm**



FREEZE / THAW

**RESISTANT**  
ASTM C 10226



WATER ABSORPTION

**~0,1%**  
ASTM C 373



RECOMMENDED USE



CHEMICAL/STAIN RESISTANCE

**Class: A**  
ASTM C 650  
**Class: A**  
ASTM C 1378



SLIP RESISTANCE

**≥0,42**  
ANSI 137.1 (DCOF)

**PACKAGE** 8 1/2"x40"  
21,5x100 cm

Pieces 6  
Sq.Ft. 13.90  
Lbs. 54.20



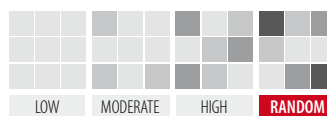
Box

Boxes 42  
Sq.Ft. 583.80  
Lbs. 2320.00



Europallet

## SHADE VARIATION



LOW

MODERATE

HIGH

**RANDOM**