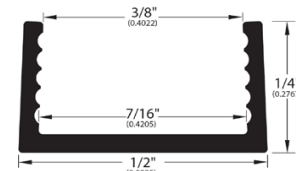
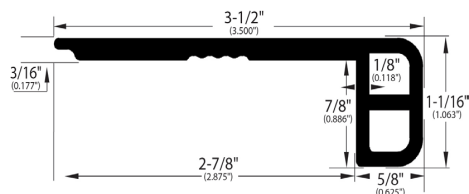
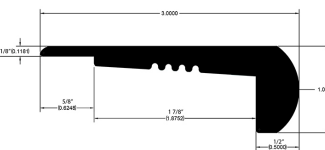


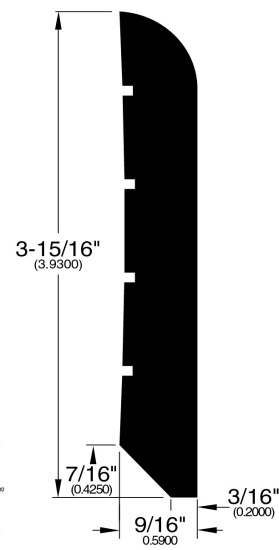
Overlap Stair Nose (292)
Fits floors 10-15 MM



Track (286)
Optional track for profiles 283, 289, 290, 291, 292, 293, 295, 338 only



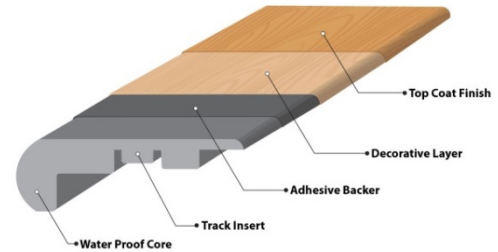
Stair Nose (273)
Fits floors 2.5-6 MM



Wall Base (294)
Fits all floors

ENDURACOR™ Installation Guide

Installation of most of our Enduracor profiles gives you the option of installing them with or without the use of our track. (*Profiles 059, 297, 288, 294 and 296 do not use the track.*) However, whether using the track or not, a few guidelines must be followed for proper function and durability. The extensive third-party testing of the Enduracor product we had performed leads us to the following recommendations when installing any of our profiles:



- Start with a flat, clean surface for gluing down the profiles.
Allow proper cure time for any floor levelers or concrete moisture abatement products to properly cure.
- Anticipate the overall thickness of your WPC product to be installed.
 - Our Enduracor profiles are designed to accommodate most floors from 6 to 10 mm in thickness.
- **DO NOT nail or drill into any Enduracor profiles.** If you do, note that you have compromised the water resistant wear layer and Artistic Finishes will not be liable for any potential performance issues.
- Cutting Enduracor is easy. Angled cuts for overlapping continuous runs can be accomplished using a compound miter saw. We do not recommend using a hand saw.
- If you use the optional track, remember to secure the track prior to fastening the profile.
 - Our rabbited edged track allows for a quick grab of the product.
- Follow the manufacturer's recommendations for your adhesives cure time.
 - Installation with or without a track will require proper cure times.

Because we strongly advise NO nailing or screwing the profile for installation, we highly recommend using the **Wakol MS 245 Montinator** adhesive to secure the profile in place. It features high green grab capabilities that are unmatched by other adhesives and provides high bond strength, even in commercial applications. It requires "NO FLASH time". It is solvent free "zero VOC" and water free so you should have no concerns with shipping and freeze/thaw cycles. MS 245 adheres immediately upon contact. Its fast curing time of 24 hours allows you to tape off (we highly recommend Scotch 3M #2090 painter's tape) a full set of steps, which will enable walking on them the next day. One tube will produce enough adhesive for approximately 50 lineal feet at a ¼ inch bead. This equates to 3 to 5 pieces of molding installation. Any excess adhesive can be easily removed once fully cured.



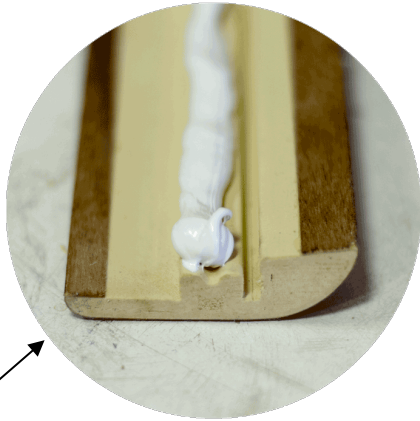
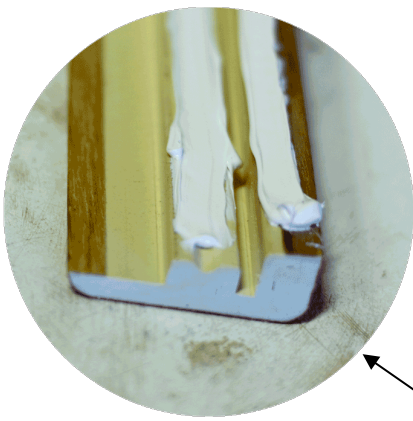
Application of MS 245 Montinator – Always ensure jobsite conditions meet NWFA Guidelines. Cut cartridge at the very top end. Next, screw the nozzle attachment to the cartridge and cut the end at a 45 degree angle, leaving a ¼" opening. Place the cartridge of a standard caulking gun and press the trigger until primed. Applying the adhesive to the profile bottom may allow for a more controlled application, but applying MS 245 to the subfloor may also yield acceptable results. Check your length and anticipated location of each profile prior to laying a bead of adhesive. Firmly press the desired section of the profiles against the sub floor, and occasionally lift the piece to ensure a transfer from the profile surface is made to the bonding surface.

Instructions for Modifications – To accommodate greater height variance while using either the **T-mold (289)**, **Square nose (291)**, or **Reducer (290)** use either our track insert and/or additional adhesive in prescribed locations shown in the adhesive placement section. Additional adhesive may also be required beneath the track base. Our recommended adhesive is Wakol's MS245 or any high quality siliconized elastomeric caulk of your intended color choice to complete these installation variations.

For more installation information, visit our YouTube channel for installation videos.

****Due to the variation in floor thickness and diverse installation methods of non-wood floors, installation adjustments may need to be made at the jobsite.***

ENDURACOR™ Montinator MS 245 Adhesive Placement



The Overlap Reducer and Square Nose can either have one or two strips of glue. Both options are shown here.

